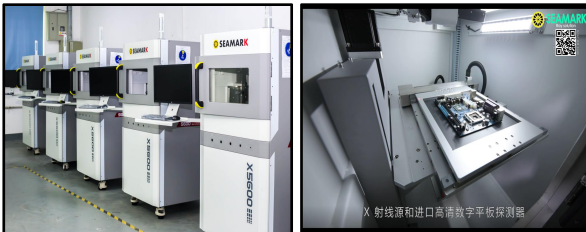


## X5600

X5600 is a small precision micro-focus X-ray inspection equipment, suitable for R&D enterprise, laboratories, quality inspection rooms etc., it is the first choice for X-ray inspection of small parts.

### Application Advantage

- ◆ Miniaturized equipment, easy to install and operate.
- ◆ Applicable to Chip, LED, BGA/CSP, Wafer, SOP/QFN, SMT and PTU packaging, Sensors, connectors, and precision Castings inspection.
- ◆ High resolution design to get the best image in a very short time.
- ◆ Infrared automatic navigation and positioning function can select the shooting location quickly.
- ◆ CNC inspection mode which can quickly and automatically inspect multi-point array.
- ◆ Inclined multi-angle inspection makes it easier to inspect sample defects.
- ◆ Simple software operation, low operating costs
- ◆ Long lifespan



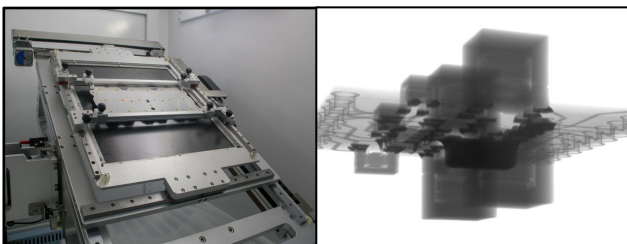
### Tilt / Rotate Function

#### ■ Tilt angle inspection function

The X5600 detector support a tilt angle of  $\pm 30^\circ$ . For cases where the photo taken on the front of a special device can't identify the defect feature, the tilt function can be used to observe the device features at multiple angles, making it easier to analyze and identify the defect.

#### ■ 360° Rotating photo inspection function

Equipped with a rotating manipulator that can rotate 360° to take images, no dead angle for defects observation.



### X-ray Tube Specification

Tube Type	Reflective Sealed Micro-Focus X-Ray Tube
Voltage Range	0-90KV
Electricity Range	0-200 $\mu$ A
MAX Output Power	8 W
Micro Focus Size	15 $\mu$ m

### Flat Panel Detector Specification

Detector Type	Amorphous silicon flat panel detector
Pixel Matrix	1536 $\times$ 1536
Field of View	130mm $\times$ 130mm
Resolution	5.5Lp/mm
Frame (1 $\times$ 1)	20fps
AD Conversion Bit	16bits

### Equipment Specification

Dimensions	L850mm $\times$ W1000mm $\times$ H1700mm
Input Power	220V 10A 50-60HZ
MAX Sample Size	280mm $\times$ 320mm
Operation System	Industrial computer WIN10 64Bit
Net Weight	750KG