

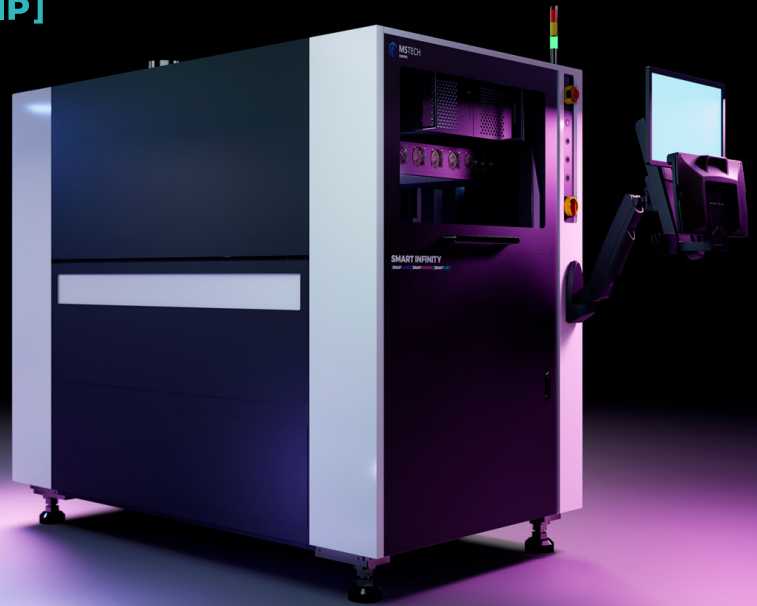
# SMART INFINITY

[SNAPCURE] [SNAPVISION] [SNAPFLIP]

## MULTI FUNCTION PLATFORM

### COMPLIANCES

- ISO7 (Class 10000)
- ESD Level 1
- CE Certification
- SMEMA Compliant
- IPC-CFX



## TOP/BOTTOM MULTI FUNCTION PLATFORM

### PROCESS CONTROL

Unique concept for optimized floor space and labor with no compromise to productivity.



### UNIQUE CONCEPT

#### CONFIGURATION FLEXIBILITY

- High resolution multi type inspection
- 1D/2D barcode reading
- Multi wave length curing
- Multi sensors (ESD, humidity, temperature, etc.)

#### PRODUCTIVITY

- Less than 4 seconds inspection time
- Curing time aprox. 7 seconds
- Flip less than 2 seconds

#### TRACEABILITY

- Process tracker
- Live process parameters log
- Embedded trend analysis

#### OPTIMIZATION

- Floor space & facility savings
- Energy efficient
- Eco-friendly

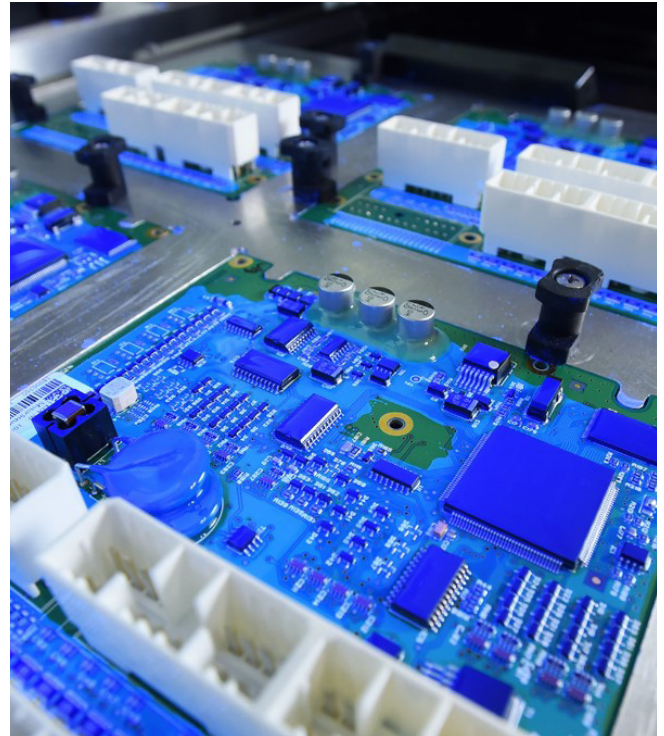
### STANDARD OPTIONS



## FEATURES

Single or dual lane capability up to 510 x 460 mm.

- Automatic width adjustment.
- InLet / OutLet shutters.
- Conveyor direction L to R (R to L optional).
- Wave length controller and closed-loop radiation.
  - Ionizer
  - Real time process monitoring
  - Multi-language user interface & documentation



## OPTIONS

- Process related sensors:
  - ESD impurity sensor
  - Humidity and temperature
  - UV wave length and dose
  - More on demand
- Dispensed geometrical element trend analysis with up-stream communication.
- Local process supervision display.
- Industry 4.0 - SECS/Gem, UAC, Hermes, Opcon, IPC-CFX, Process Tracker & more on demand.



TEMPERATURE



HUMIDITY



UV WAVE



INDUSTRY 4.0



PROCESS TRACKER

## SPECIFICATIONS SINGLE AND DUAL LANE BELT

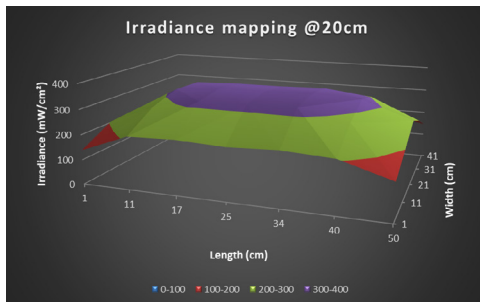
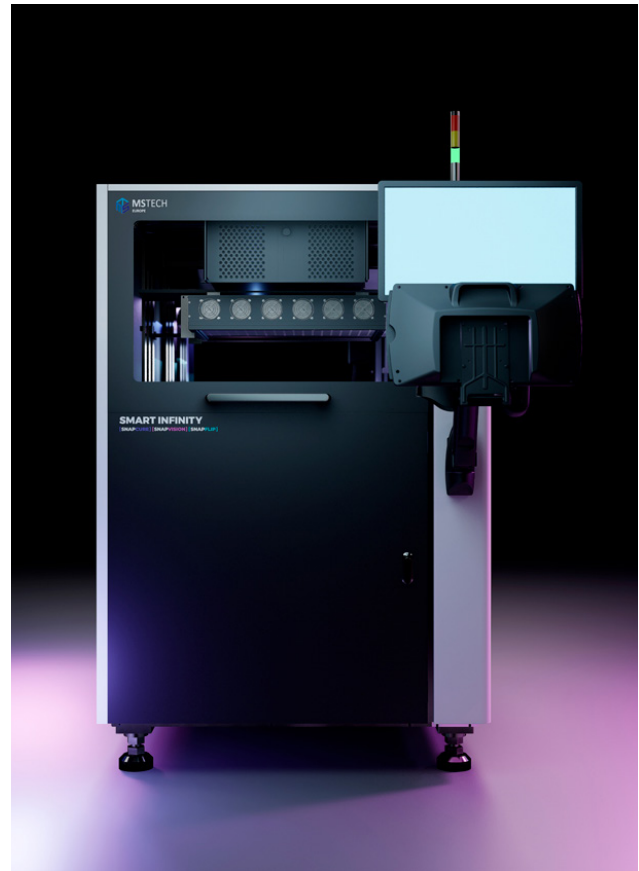
Dimensions	1200x1850x1650 mm
Voltage	AC 110/220V, 50/60Hz
Weight	Approx: 850 kg
Conveyor type	Edge transportation with flat belt or pin chain
Max conveyor weight	10 kg (22lbs)
Dual mode max width	250 mm
Single mode max width	460 mm

## [SNAPCURE]

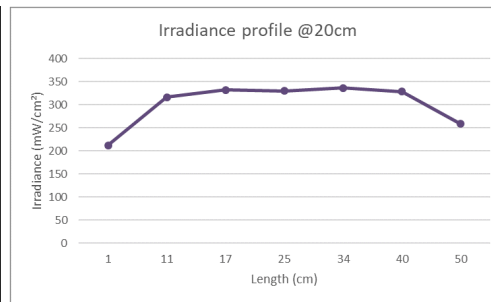
## [WORLD'S BEST EFFICIENCY]

### UV/IR LED MATRIX PANEL

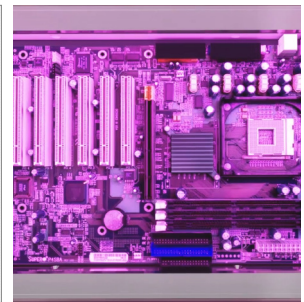
- Up to two lamps:
  - Lamps size: 250 x 400 mm or 500 x 400 mm
- Single wave Length IR LED 810 nm.
- Single Wave Length UV LED 275 nm, 365 nm or 395 nm.
- Multi Wave Length UV LED lamp 275 nm, 365 nm and 395 nm.
- Radiation set up:
  - up to 800 mW/cm<sup>2</sup> (contact us for more info)
  - accumulated radiation ∞ mJ/cm<sup>2</sup>
  - e.g. 500 mW/cm<sup>2</sup> x 5seg = 2500mJ/cm<sup>2</sup>
- Guaranteed life time 20.000 hours.
- Optional chamber (Vacuum / N<sub>2</sub>).
- Material self programming library.



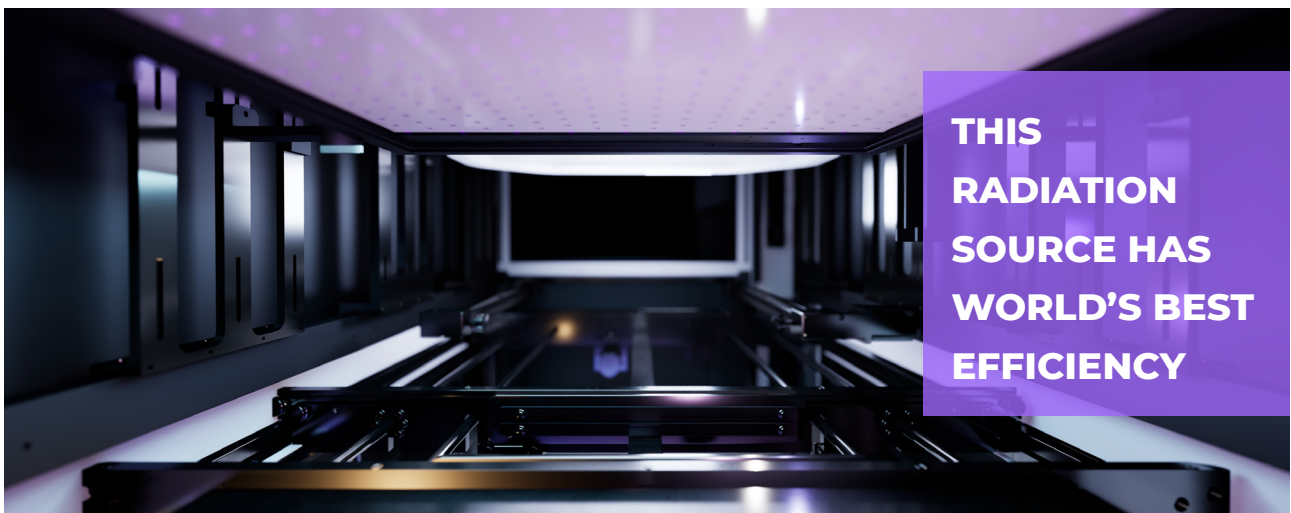
Irradiance mapping



Irradiance profile



Guaranteed life time 20.000 h



**THIS  
RADIATION  
SOURCE HAS  
WORLD'S BEST  
EFFICIENCY**

## [SNAPVISION]

## [WORLD'S BEST PRODUCTIVITY]

### INSPECTION FIXED CAMERA BASED

#### // APPLICATION

Underfill, potting, glue, corner bonding, thermal paste, gap filler, coating, nano coating, screw, top THT, optical bonding, latex, wax, foreign particules, datamatrix, labels, QR and more.

#### // FEATURES

- Resolution down to 40 um.
- Standard pallet and PCB size FOV up to 500 x 400 mm.
- Intuitive programming UI.
- Max. inspection time less than 4 sec. per lane.
- Ultra thin coating compatible.
- Light source: multi-LED illumination.
- No periodical calibration of camera needs.

### OPTIONS

- User friendly repair station.
- Offline programming.
- Thickness trend measurement IPC compliant.



#### Inspection Unit

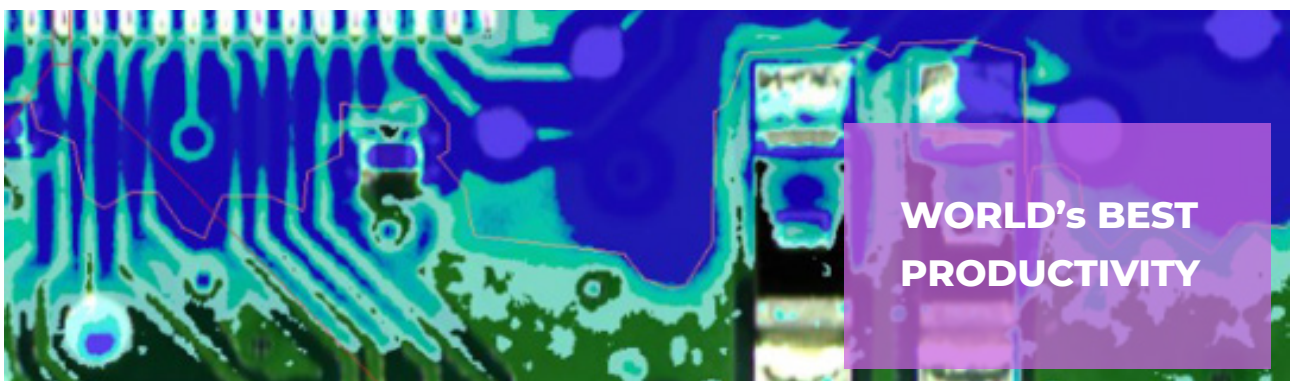
168 Mpx  
Color camera  
Light source: multi-color LED illumination  
Adjustable illumination profiles  
Triggered light control  
Rectified image

#### System-PC

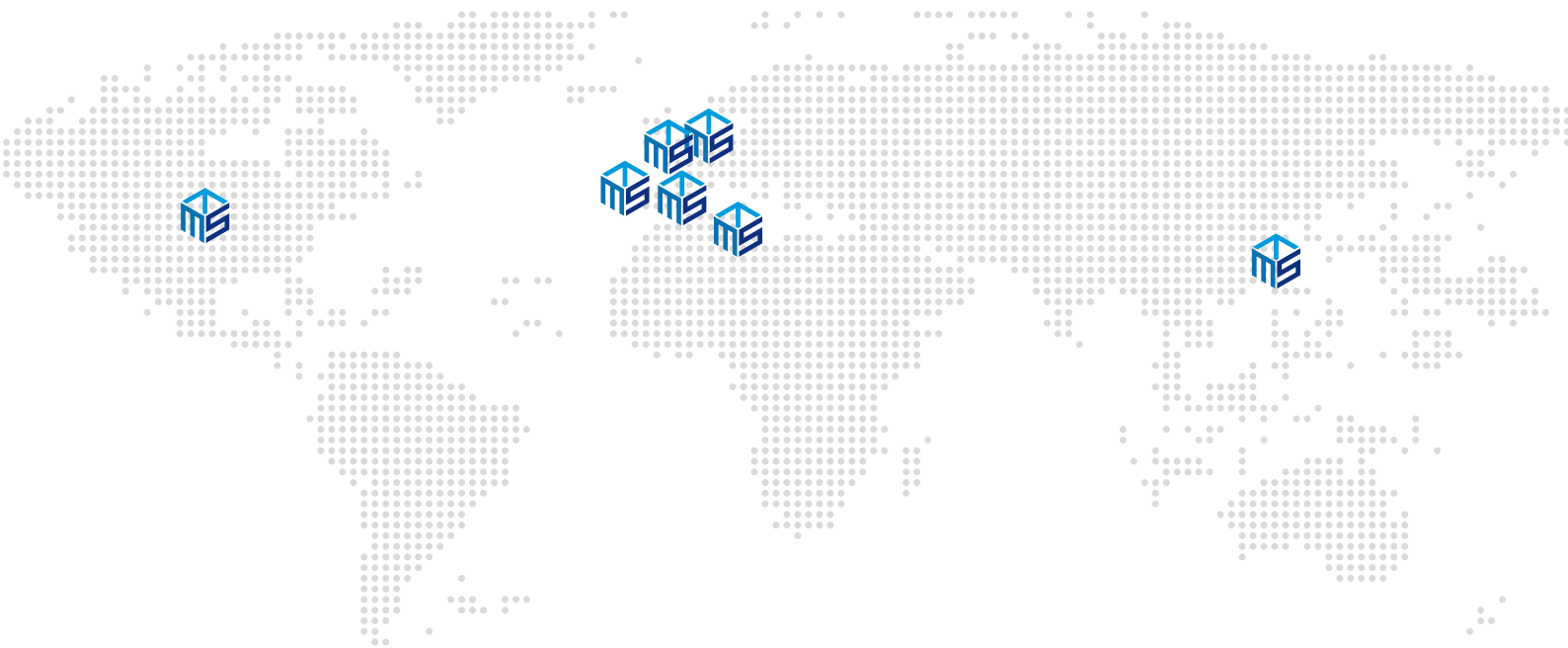
Industrial PC processor i7 or i9. Windows 10, 64 bits.

#### Inspection Speed

2 to 4 (by side) seconds full area independent of the number of inspection parts



# GLOBAL NETWORK



 PART OF INCORPORATECHNO

[WWW.MSTECHCORP.EU](http://WWW.MSTECHCORP.EU)

**FACTORYCENTER**  
SEOUL - BARCELONA

**BUSINESSCENTER**  
KOREA - MEXICO - GERMANY  
FRANCE - SPAIN - PORTUGAL - TUNISIA

**TESTCENTER**  
KOREA - SPAIN - FRANCE

**FACTORYCENTER**  
**BARCELONA**

Ctra. C-31, 148.4. Masia Les Planes, 20.  
Camí de Les Planes. 08880 Cubelles,  
Barcelona. Spain

[administrative@mstechcorp.eu](mailto:administrative@mstechcorp.eu)

**BUSINESSCENTER**

[sales@mstechcorp.eu](mailto:sales@mstechcorp.eu)

[services@mstechcorp.eu](mailto:services@mstechcorp.eu)

